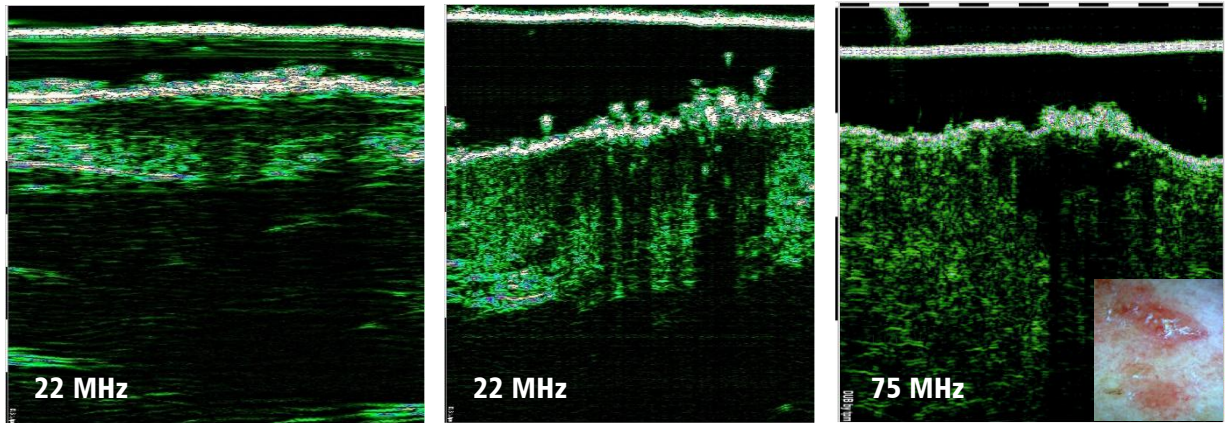


Actinic keratosis – 22 & 75 MHz



Actinic keratosis imaged with 22 MHz and 75 MHz, localized at the outer side of left forearm at a 64 year old patient

Epidermis non-even and increased in thickness up to 297-395 μm (in control scan 94 μm), dermis thickness slightly increased 1668 μm , (in control scan 1336 μm). Dermis acoustic density decreased up to 15 (in control 44), but probably, because of high reflection of pathologically changed epidermis which leads to the appearance of shadows in the image of the underlying tissue. It is also necessary take in attention that very often at patients with actinic keratosis (not for this example) the elastotic changes could be detected in upper dermis (SLEB phenomena). Dermis thickness in ROI slightly increased 1610 μm , in control 1240 μm , this changes in dermis could be explained by infiltration of the dermis by lymphocytes, which is typical part of actinic keratosis pathogenesis.